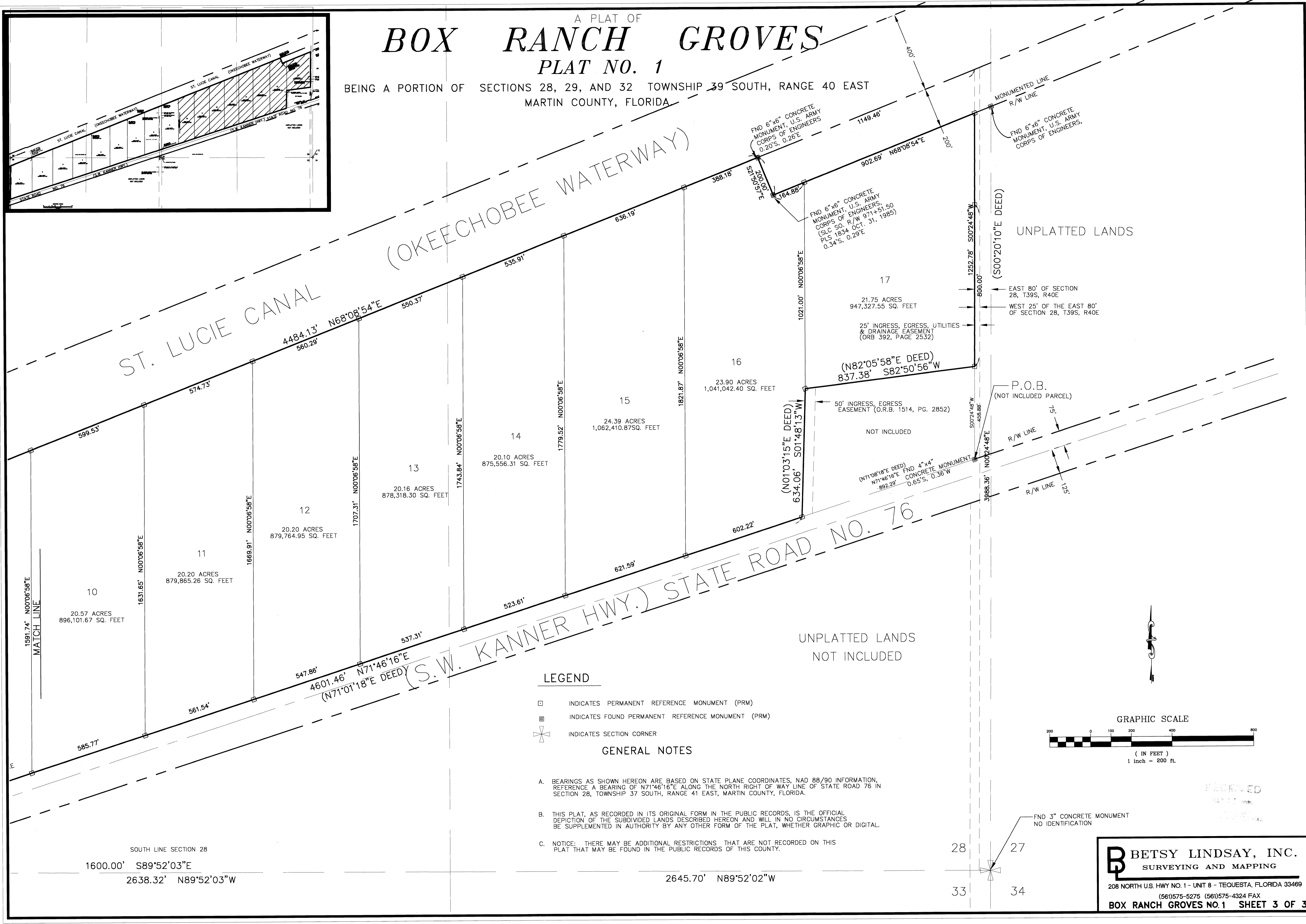
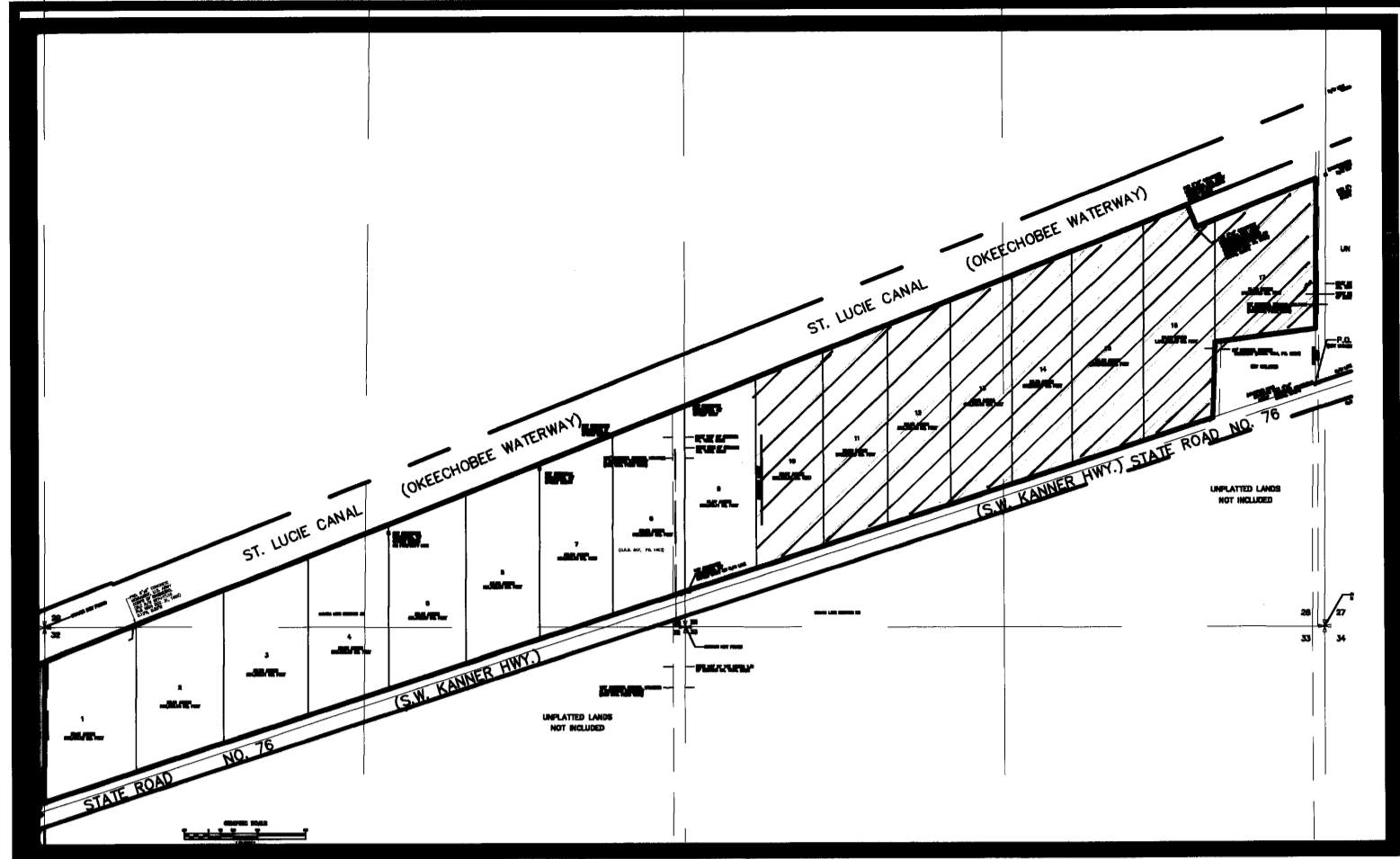


A PLAT OF BOX RANCH GROVES PLAT NO. 1

BEING A PORTION OF SECTIONS 28, 29, AND 32 TOWNSHIP 39 SOUTH, RANGE 40 EAST
MARTIN COUNTY, FLORIDA

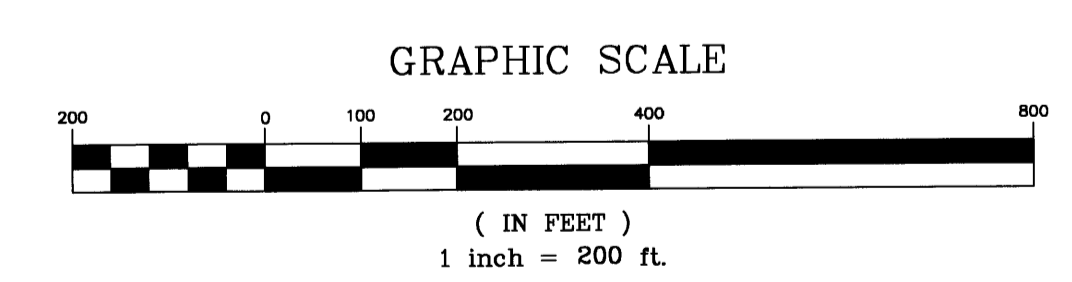


LEGEND

- INDICATES PERMANENT REFERENCE MONUMENT (PRM)
- ⊕ INDICATES FOUND PERMANENT REFERENCE MONUMENT (PRM)
- ⊕ INDICATES SECTION CORNER

GENERAL NOTES

- A. BEARINGS AS SHOWN HEREON ARE BASED ON STATE PLANE COORDINATES, NAD 88/90 INFORMATION, REFERENCE A BEARING OF N71°46'16"E ALONG THE NORTH RIGHT OF WAY LINE OF STATE ROAD 76 IN SECTION 28, TOWNSHIP 37 SOUTH, RANGE 41 EAST, MARTIN COUNTY, FLORIDA.
- B. THIS PLAT, AS RECORDED IN ITS ORIGINAL FORM IN THE PUBLIC RECORDS, IS THE OFFICIAL DEPICTION OF THE SUBDIVIDED LANDS DESCRIBED HEREON AND WILL IN NO CIRCUMSTANCES BE SUPPLEMENTED IN AUTHORITY BY ANY OTHER FORM OF THE PLAT, WHETHER GRAPHIC OR DIGITAL.
- C. NOTICE: THERE MAY BE ADDITIONAL RESTRICTIONS THAT ARE NOT RECORDED ON THIS PLAT THAT MAY BE FOUND IN THE PUBLIC RECORDS OF THIS COUNTY.



B BETSY LINDSAY, INC.
SURVEYING AND MAPPING
208 NORTH U.S. HWY. NO. 1 - UNIT 8 - TEQUESTA, FLORIDA 33469
(561)575-5275 (561)575-4324 FAX
BOX RANCH GROVES NO.1 SHEET 3 OF 3

SOUTH LINE SECTION 28
1600.00' S89°52'03"E
2638.32' N89°52'03"W

2645.70' N89°52'02"W

28
27
33
34